

An aerial photograph of a tropical beach. The top half shows a sandy beach with several palm trees and their shadows cast on the sand. The bottom half shows clear, turquoise water. The text is centered in the middle of the image.

# CALA

SAHL HASHEESH

*Phase 1*



*Discover a world of tranquillity  
and luxury at CALA*

.beachfront

<https://www.beachfront-realestate.com>

## Building Types

- Type A
- Type A1
- Type B
- Type B1
- Type C
- Type C1
- Type E
- Type E1
- Type Em
- Type E1m
- Type F
- Type G
- Type H
- Type Gm
- Club House



# Type A - Summary

## No. of floors : 3

- Ground Floor
- First Floor
- second Floor

## No. of units: 4 per floor

## Unit type: two bedroom

## Unit area: 112 m<sup>2</sup> to 116 m<sup>2</sup>

## Penthouse area: 121 m<sup>2</sup> to 125 m<sup>2</sup>



**Building Location**

## DISCLAIMER

All render and visual materials are for illustrative purpose only. actual areas may vary from the stated figures. All dimensions are measured to structural elements. Capital Link reserved the right to make minor modifications without prior notice. Unit floor plan might be mirrored according to its location in the layout.



beachfront  
//www.beachfront-realestate.com

# *Type A - Ground floor*

## **Unit G1 - Two bedroom**

**Area** 115.6 m<sup>2</sup>

**Garden** 18.3 m<sup>2</sup>

## **Unit G2 - Two bedroom**

**Area** 112.7 m<sup>2</sup>

**Garden** 39 m<sup>2</sup>

## **Unit G3 - Two bedroom**

**Area** 112.8 m<sup>2</sup>

**Garden** 39 m<sup>2</sup>

## **Unit G4 - Two bedroom**

**Area** 112.2 m<sup>2</sup>

**Garden** 20.9 m<sup>2</sup>

beachfront

<https://www.beachfront-realestate.com>

### **DISCLAIMER**

All render and visual materials are for illustrative purpose only, actual areas may vary from the stated figures. All dimensions are measured to structural elements. Capital Link reserved the right to make minor modifications without prior notice. Unit floor plan might be mirrored according to its location in the layout.



# *Type A - First floor*

## **Unit F1 - Two bedroom**

**Area**            **115.6 m<sup>2</sup>**

## **Unit F2 - Two bedroom**

**Area**            **115.6 m<sup>2</sup>**

## **Unit F3 - Two bedroom**

**Area**            **115.7 m<sup>2</sup>**

## **Unit F4 - Two bedroom**

**Area**            **112.2 m<sup>2</sup>**

beachfront

<https://www.beachfront-realestate.com>

### **DISCLAIMER**

All render and visual materials are for illustrative purpose only, actual areas may vary from the stated figures. All dimensions are measured to structural elements. Capital Link reserved the right to make minor modifications without prior notice. Unit floor plan might be mirrored according to its location in the layout.





# *Type A - Second floor*

## **Unit P1 - Two bedroom**

**Area** 121.7 m<sup>2</sup>

**Roof Terrace** 51.6 m<sup>2</sup>

## **Unit P2 - Two bedroom**

**Area** 125.6 m<sup>2</sup>

**Roof Terrace** 70.3 m<sup>2</sup>

## **Unit S3 - Two bedroom**

**Area** 113 m<sup>2</sup>

## **Unit P4 - Two bedroom**

**Area** 121.8 m<sup>2</sup>

**Roof Terrace** 81.9 m<sup>2</sup>

### **DISCLAIMER**

All render and visual materials are for illustrative purpose only, actual areas may vary from the stated figures. All dimensions are measured to structural elements. Capital Link reserved the right to make minor modifications without prior notice. Unit floor plan might be mirrored according to its location in the layout.

beachfront

<https://www.beachfront-realestate.com>



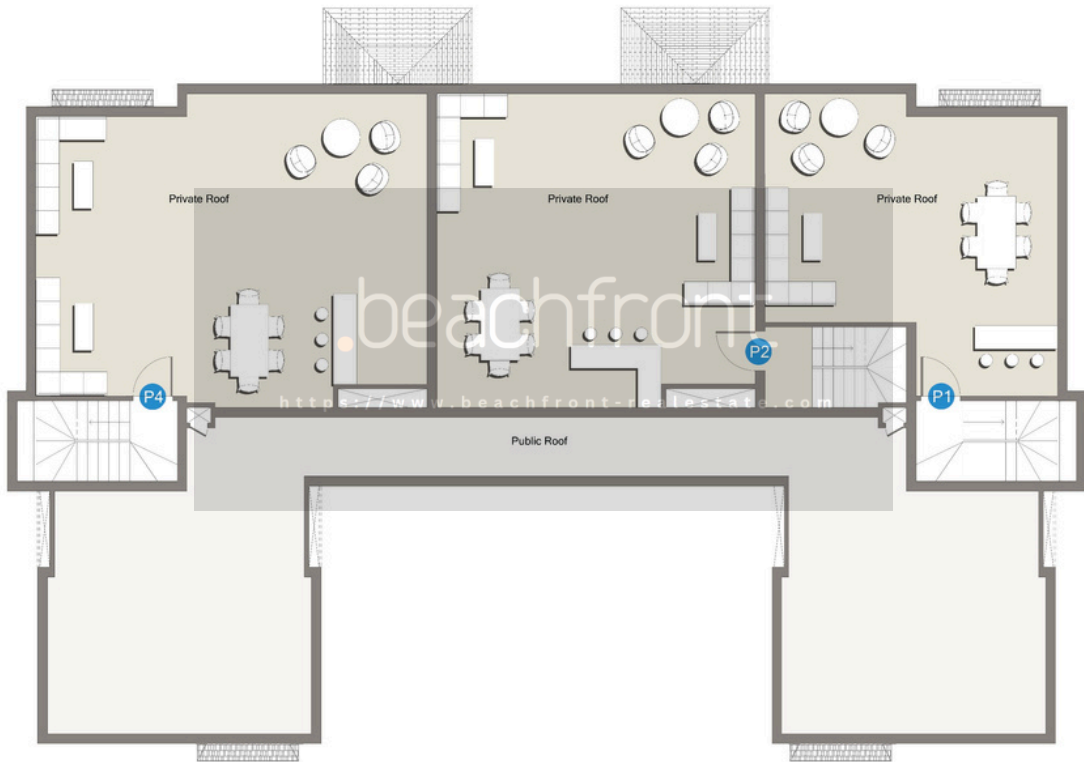
# *Type A - Roof floor*

beachfront

<https://www.beachfront-realestate.com>

## **DISCLAIMER**

All render and visual materials are for illustrative purpose only. actual areas may vary from the stated figures. All dimensions are measured to structural elements. Capital Link reserved the right to make minor modifications without prior notice. Unit floor plan might be mirrored according to its location in the layout.



# Type A1 - Summary

## No. of floors : 4

- Garden Floor
- Entrance Floor
- First Floor
- second Floor

## No. of units: 4 per floor

## Unit type: two bedroom

## Unit area: 112 m<sup>2</sup> to 123 m<sup>2</sup>

## Penthouse area: 121 m<sup>2</sup> to 126 m<sup>2</sup>



Building Location

## DISCLAIMER

All render and visual materials are for illustrative purpose only, actual areas may vary from the stated figures. All dimensions are measured to structural elements. Capital Link reserved the right to make minor modifications without prior notice. Unit floor plan might be mirrored according to its location in the layout.



# *Type A1 - Garden floor*

## **Unit GA1 - Two bedroom**

**Area** 115.6 m<sup>2</sup>

**Garden** 19.1 m<sup>2</sup>

**English Court** 21.6 m<sup>2</sup>

## **Unit GA2 - Two bedroom**

**Area** 112.7 m<sup>2</sup>

**Garden** 40.8 m<sup>2</sup>

## **Unit GA3 - Two bedroom**

**Area** 112.8 m<sup>2</sup>

**Garden** 41.0 m<sup>2</sup>

## **Unit GA4 - Two bedroom**

**Area** 112.1 m<sup>2</sup>

**Garden** 21.5 m<sup>2</sup>

**English Court** 21.6 m<sup>2</sup>

beachfront

<https://www.beachfront-realestate.com>

### **DISCLAIMER**

All render and visual materials are for illustrative purpose only. actual areas may vary from the stated figures. All dimensions are measured to structural elements. Capital Link reserved the right to make minor modifications without prior notice. Unit floor plan might be mirrored according to its location in the layout.





# *Type A1 - Entrance floor*

## **Unit E1 - Two bedroom**

**Area**            **115.6 m<sup>2</sup>**

## **Unit E2 - Two bedroom**

**Area**            **117.8 m<sup>2</sup>**

## **Unit E3 - Two bedroom**

**Area**            **118.2 m<sup>2</sup>**

## **Unit E4 - Two bedroom**

**Area**            **119.6 m<sup>2</sup>**

beachfront

<https://www.beachfront-realestate.com>

### **DISCLAIMER**

All render and visual materials are for illustrative purpose only. actual areas may vary from the stated figures. All dimensions are measured to structural elements. Capital Link reserved the right to make minor modifications without prior notice. Unit floor plan might be mirrored according to its location in the layout.



# *Type A1 - First floor*

## **Unit F1 - Two bedroom**

**Area**            **115.6 m<sup>2</sup>**

## **Unit F2 - Two bedroom**

**Area**            **122.9 m<sup>2</sup>**

## **Unit F3 - Two bedroom**

**Area**            **123 m<sup>2</sup>**

## **Unit F4 - Two bedroom**

**Area**            **112.1 m<sup>2</sup>**

beachfront

<https://www.beachfront-realestate.com>

### **DISCLAIMER**

All render and visual materials are for illustrative purpose only. actual areas may vary from the stated figures. All dimensions are measured to structural elements. Capital Link reserved the right to make minor modifications without prior notice. Unit floor plan might be mirrored according to its location in the layout.



# *Type A1 - Second floor*

## **Unit P1 - Two bedroom**

**Area**            **121.7 m<sup>2</sup>**

**Roof Terrace**    **45.4 m<sup>2</sup>**

## **Unit P2 - Two bedroom**

**Area**            **125.5 m<sup>2</sup>**

**Roof Terrace**    **70.3 m<sup>2</sup>**

## **Unit S3 - Two bedroom**

**Area**            **113 m<sup>2</sup>**

## **Unit P4 - Two bedroom**

**Area**            **121.8 m<sup>2</sup>**

**Roof Terrace**    **75.7 m<sup>2</sup>**

### **DISCLAIMER**

All render and visual materials are for illustrative purpose only, actual areas may vary from the stated figures. All dimensions are measured to structural elements. Capital Link reserved the right to make minor modifications without prior notice. Unit floor plan might be mirrored according to its location in the layout.

beachfront

<https://www.beachfront-realestate.com>



# *Type A1 - Roof floor*

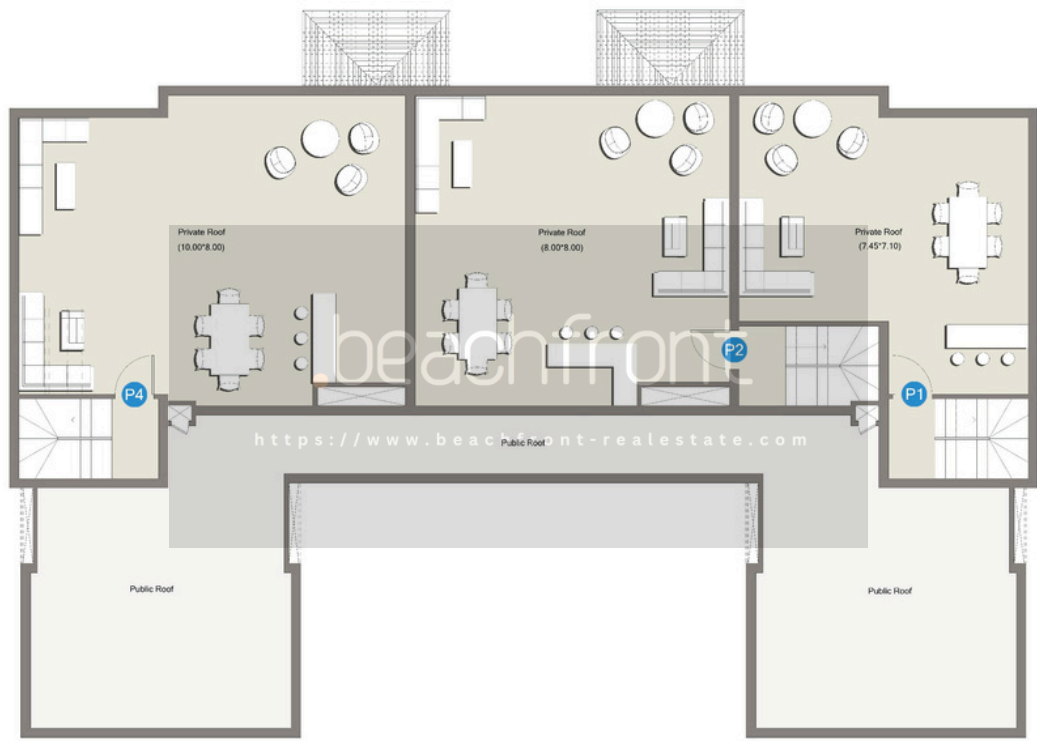
beachfront

<https://www.beachfront-realestate.com>

## **DISCLAIMER**

All render and visual materials are for illustrative purpose only. actual areas may vary from the stated figures. All dimensions are measured to structural elements. Capital Link reserved the right to make minor modifications without prior notice. Unit floor plan might be mirrored according to its location in the layout.





# Type B - Summary

## No. of floors : 3

- Ground Floor
- First Floor
- second Floor

## No. of units: 5 per floor

Unit type: Studio & One bedroom

Unit area: 58 m<sup>2</sup> to 82 m<sup>2</sup>

Penthouse area: 84 m<sup>2</sup> to 95 m<sup>2</sup>



Building Location

## DISCLAIMER

All render and visual materials are for illustrative purpose only. actual areas may vary from the stated figures. All dimensions are measured to structural elements. Capital Link reserved the right to make minor modifications without prior notice. Unit floor plan might be mirrored according to its location in the layout.



beachfront

s://www.beachfrontrealestate.com

# Type B - Ground floor

## Unit G1 - One bedroom

Area: 80.87 m<sup>2</sup>

Garden: 19.95 m<sup>2</sup>

## Unit G2 - One bedroom

Area: 80.00 m<sup>2</sup>

Garden: 32.21 m<sup>2</sup>

## Unit G3 - One bedroom

Area: 81.81 m<sup>2</sup>

Garden: 34.81 m<sup>2</sup>

## Unit G4 - Studio

Area: 58.52 m<sup>2</sup>

Garden: 11.55 m<sup>2</sup>

## Unit G5 - One bedroom

Area: 81.64 m<sup>2</sup>

Garden: 18.93 m<sup>2</sup>

beachfront

<https://www.beachfront-realestate.com>

### DISCLAIMER

All render and visual materials are for illustrative purpose only. actual areas may vary from the stated figures. All dimensions are measured to structural elements. Capital Link reserved the right to make minor modifications without prior notice. Unit floor plan might be mirrored according to its location in the layout.



# *Type B - First floor*

## **Unit F1 - One bedroom**

**Area: 80.87 m<sup>2</sup>**

## **Unit F2 - One bedroom**

**Area: 80.00 m<sup>2</sup>**

## **Unit F3 - One bedroom**

**Area: 81.81 m<sup>2</sup>**

## **Unit F4 - Studio**

**Area: 58.52 m<sup>2</sup>**

## **Unit F5 - One bedroom**

**Area: 81.64 m<sup>2</sup>.**

beachfront

<https://www.beachfront-realestate.com>

### **DISCLAIMER**

All render and visual materials are for illustrative purpose only. actual areas may vary from the stated figures. All dimensions are mesured to structural elements. Capital Link reserved the right to make minor modifications without prior notice. Unit floor plan might be mirrored according to its location in the layout.



beachfront  
[www.beachfront-reale.com](http://www.beachfront-reale.com)

# Type B - Second floor

## Unit P1 - One bedroom

Area: 83.90 m<sup>2</sup>.

Roof: 66.66 m<sup>2</sup>.

## Unit S2 - One bedroom

Area: 80.70 m<sup>2</sup>.

## Unit P3 - One bedroom

Area: 94.68 m<sup>2</sup>.

Roof: 47.51 m<sup>2</sup>.

## Unit S4 - Studio

Area: 53.50 m<sup>2</sup>.

## Unit P5 - One bedroom

Area: 89.50 m<sup>2</sup>.

Roof: 57.81 m<sup>2</sup>.

beachfront

<https://www.beachfront-realestate.com>

### DISCLAIMER

All render and visual materials are for illustrative purpose only. actual areas may vary from the stated figures. All dimensions are measured to structural elements. Capital Link reserved the right to make minor modifications without prior notice. Unit floor plan might be mirrored according to its location in the layout.





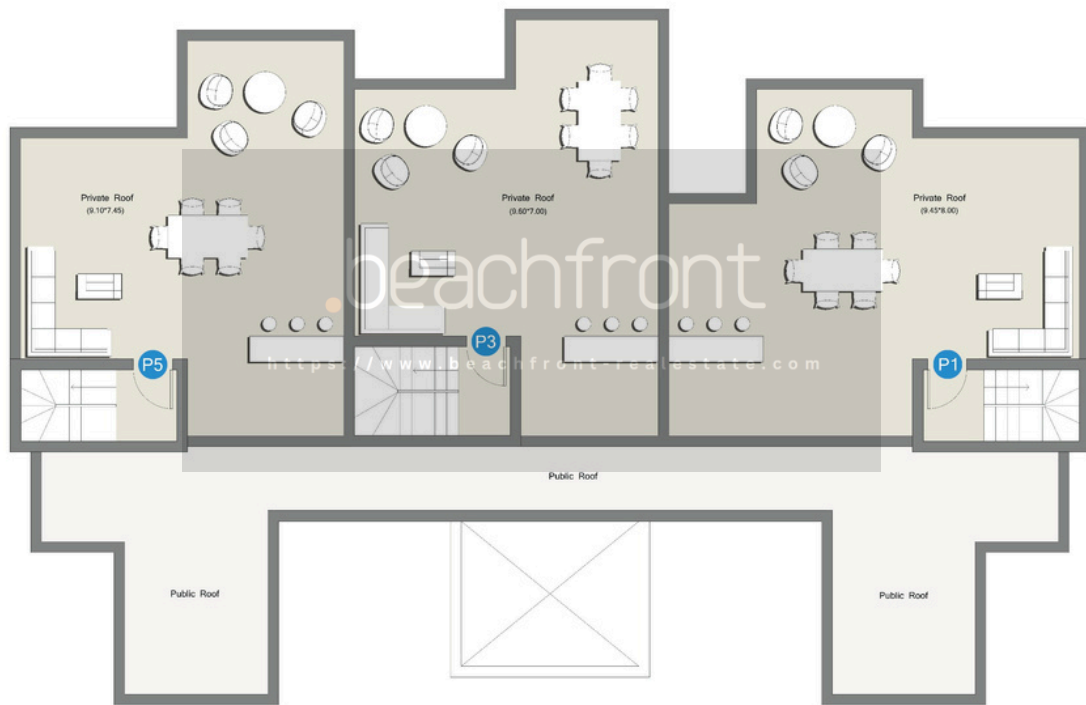
# *Type B - Roof floor*

beachfront

<https://www.beachfront-realestate.com>

## **DISCLAIMER**

All render and visual materials are for illustrative purpose only. actual areas may vary from the stated figures. All dimensions are measured to structural elements. Capital Link reserved the right to make minor modifications without prior notice. Unit floor plan might be mirrored according to its location in the layout.



# *Type B1 - Summary*

## **No. of floors : 4**

- Garden Floor
- Entrance Floor
- First Floor
- second Floor

## **No. of units: 5 per floor**

## **Unit type: Studio & One bedroom**

## **Unit area: 55 m<sup>2</sup> to 98 m<sup>2</sup>**

## **Penthouse area: 85 m<sup>2</sup> to 95 m<sup>2</sup>**



**Building Location**

## **DISCLAIMER**

All render and visual materials are for illustrative purpose only. actual areas may vary from the stated figures. All dimensions are measured to structural elements. Capital Link reserved the right to make minor modifications without prior notice. Unit floor plan might be mirrored according to its location in the layout.



beach.com  
front sales at 000

# *Type B1 - Garden floor*

## **Unit GA1 - One bedroom**

**Area:** 84.70m<sup>2</sup>.

**Garden:** 18.01 m<sup>2</sup>.

**English Court:** 7.6 m<sup>2</sup>.

## **Unit GA2 - One bedroom**

**Area:** 80.00 m<sup>2</sup>.

**Garden:** 33.50 m<sup>2</sup>.

## **Unit GA3 - One bedroom**

**Area:** 97.70 m<sup>2</sup>.

**Garden:** 24.72 m<sup>2</sup>.

## **Unit GA4 - Studio**

**Area:** 55.83 m<sup>2</sup>.

**Garden:** 14.44 m<sup>2</sup>.

## **Unit GA5 - One bedroom**

**Area:** 78.26 m<sup>2</sup>.

**Garden:** 22.72 m<sup>2</sup>.

**English Court:** 7.6 m<sup>2</sup>.

beachfront

<https://www.beachfront-realestate.com>

### **DISCLAIMER**

All render and visual materials are for illustrative purpose only. actual areas may vary from the stated figures. All dimensions are measured to structural elements. Capital Link reserved the right to make minor modifications without prior notice. Unit floor plan might be mirrored according to its location in the layout.



# *Type B1 - Entrance floor*

## **Unit E1 - One bedroom**

**Area: 84.65 m<sup>2</sup>.**

## **Unit E2 - One bedroom**

**Area: 80.00 m<sup>2</sup>.**

## **Unit E3 - One bedroom**

**Area: 97.70 m<sup>2</sup>.**

## **Unit E4 - Studio**

**Area: 55.83 m<sup>2</sup>.**

## **Unit E5 - One bedroom**

**Area: 78.26 m<sup>2</sup>.**

### **DISCLAIMER**

All render and visual materials are for illustrative purpose only. actual areas may vary from the stated figures. All dimensions are measured to structural elements. Capital Link reserved the right to make minor modifications without prior notice. Unit floor plan might be mirrored according to its location in the layout.

beachfront

<https://www.beachfront-realestate.com>





# *Type B1 - First floor*

## **Unit F1 - One bedroom**

**Area:** 74.59 m<sup>2</sup>.

## **Unit F2 - One bedroom**

**Area:** 82.54 m<sup>2</sup>.

## **Unit F3 - One bedroom**

**Area:** 88.13 m<sup>2</sup>.

## **Unit F4 - Studio**

**Area:** 58.39 m<sup>2</sup>

## **Unit F5 - One bedroom**

**Area:** 78.28 m<sup>2</sup>.

### **DISCLAIMER**

All render and visual materials are for illustrative purpose only. actual areas may vary from the stated figures. All dimensions are measured to structural elements. Capital Link reserved the right to make minor modifications without prior notice. Unit floor plan might be mirrored according to its location in the layout.



# *Type B1 - Second floor*

## **Unit P1 - One bedroom**

**Area:** 85.81 m<sup>2</sup>.

**Roof:** 66.66 m<sup>2</sup>.

## **Unit S2 - One bedroom**

**Area:** 80.30 m<sup>2</sup>.

## **Unit P3 - One bedroom**

**Area:** 95.80 m<sup>2</sup>.

**Roof:** 47.51 m<sup>2</sup>.

## **Unit S4 - Studio**

**Area:** 56.20 m<sup>2</sup>.

## **Unit P5 - One bedroom**

**Area:** 87.90 m<sup>2</sup>.

**Roof:** 57.81 m<sup>2</sup>.

beachfront

<https://www.beachfront-realestate.com>

### **DISCLAIMER**

All render and visual materials are for illustrative purpose only. actual areas may vary from the stated figures. All dimensions are measured to structural elements. Capital Link reserved the right to make minor modifications without prior notice. Unit floor plan might be mirrored according to its location in the layout.



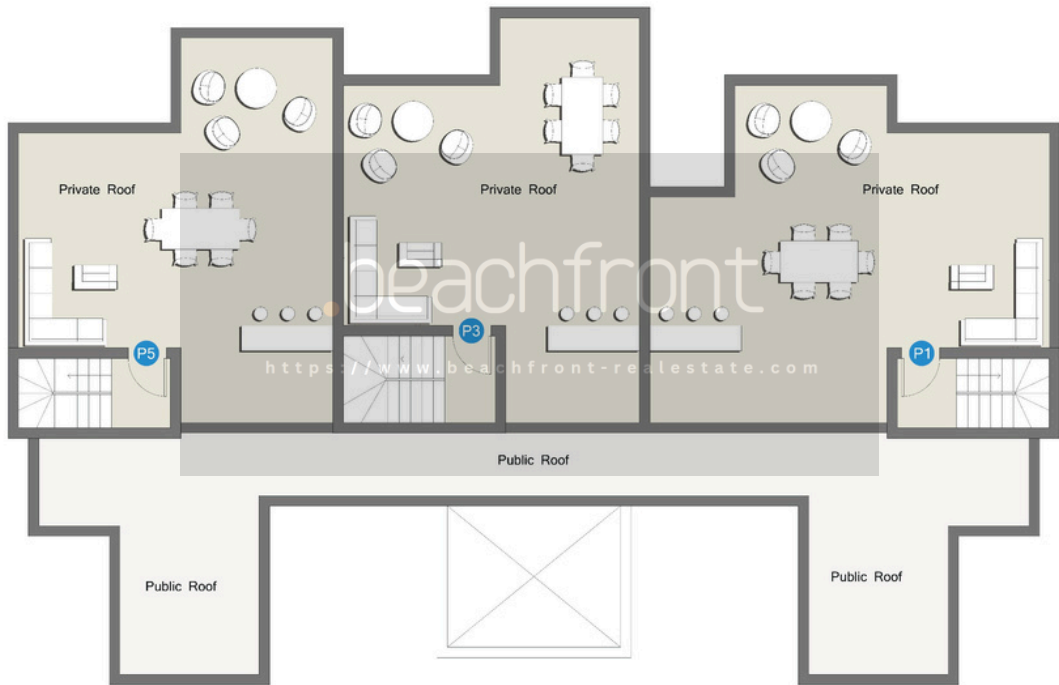
# *Type B1 - Roof floor*

beachfront

<https://www.beachfront-realestate.com>

## **DISCLAIMER**

All render and visual materials are for illustrative purpose only. actual areas may vary from the stated figures. All dimensions are measured to structural elements. Capital Link reserved the right to make minor modifications without prior notice. Unit floor plan might be mirrored according to its location in the layout.



# Type C - Summary

## No. of floors : 3

- Ground Floor
- First Floor
- second Floor

## No. of units: 2 per floor

## Unit type: Three bedroom

## Unit area: 150 m<sup>2</sup> to 151 m<sup>2</sup>

## Penthouse area: 151 m<sup>2</sup> to 156 m<sup>2</sup>



**Building Location**

## DISCLAIMER

All render and visual materials are for illustrative purpose only. actual areas may vary from the stated figures. All dimensions are measured to structural elements. Capital Link reserved the right to make minor modifications without prior notice. Unit floor plan might be mirrored according to its location in the layout.





beachfront

https://www.beachfront-realestate.com

# *Type C - Ground floor*

## **Unit G1 - Three bedroom**

**Area**            **150.8 m<sup>2</sup>**

**Garden**        **46.5 m<sup>2</sup>**

beachfront

## **Unit G2 - Three bedroom**

<https://www.beachfront-realestate.com>

**Area**            **149.9 m<sup>2</sup>**

**Garden**        **47.2 m<sup>2</sup>**

### **DISCLAIMER**

All render and visual materials are for illustrative purpose only. actual areas may vary from the stated figures. All dimensions are measured to structural elements. Capital Link reserved the right to make minor modifications without prior notice. Unit floor plan might be mirrored according to its location in the layout.



# *Type C - First floor*

## **Unit F1 - Three bedroom**

**Area**            **150.8 m<sup>2</sup>**

beachfront

## **Unit F2 - Three bedroom**

**Area**            **149.9 m<sup>2</sup>**

<https://www.beachfront-realestate.com>

### **DISCLAIMER**

All render and visual materials are for illustrative purpose only. actual areas may vary from the stated figures. All dimensions are measured to structural elements. Capital Link reserved the right to make minor modifications without prior notice. Unit floor plan might be mirrored according to its location in the layout.



# *Type C - Second floor*

## **Unit P1 - Two bedroom**

**Area** 155.6 m<sup>2</sup>

**Roof terrace** 92 m<sup>2</sup>

## **Unit P2 - Two bedroom**

**Area** 150.6 m<sup>2</sup>

**Roof terrace** 92 m<sup>2</sup>

beachfront

<https://www.beachfront-realestate.com>

### **DISCLAIMER**

All render and visual materials are for illustrative purpose only. actual areas may vary from the stated figures. All dimensions are measured to structural elements. Capital Link reserved the right to make minor modifications without prior notice. Unit floor plan might be mirrored according to its location in the layout.



# *Type C - Roof floor*

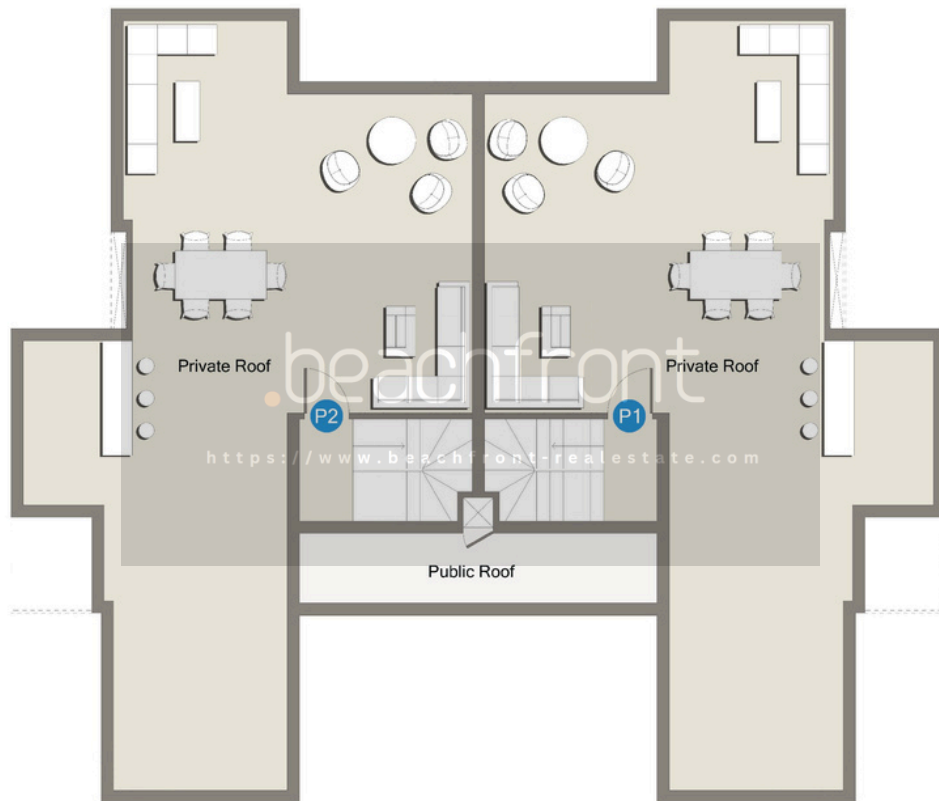
beachfront

<https://www.beachfront-realestate.com>

## **DISCLAIMER**

All render and visual materials are for illustrative purpose only. actual areas may vary from the stated figures. All dimensions are measured to structural elements. Capital Link reserved the right to make minor modifications without prior notice. Unit floor plan might be mirrored according to its location in the layout.





# Type F - Summary

## No. of floors : 3

- Entrance Floor
- First Floor
- second Floor

## No. of units: 5 per floor

## Unit type: Studio & One bedroom

## Unit area: 55 m<sup>2</sup> to 82 m<sup>2</sup>

## Penthouse area: 87 m<sup>2</sup>

<https://www.beachfront-real-estate.com>



**Building Location**

## DISCLAIMER

All render and visual materials are for illustrative purpose only. actual areas may vary from the stated figures. All dimensions are measured to structural elements. Capital Link reserved the right to make minor modifications without prior notice. Unit floor plan might be mirrored according to its location in the layout.



beachfront

<https://www.beachfrontalesta.com>

# *Type F - First floor*

## **Unit F1 - One bedroom**

**Area: 82.69 m<sup>2</sup>**

## **Unit F2 - Studio**

**Area: 56.72 m<sup>2</sup>**

## **Unit F3 - Studio**

**Area: 59.60 m<sup>2</sup>**

## **Unit F4 - Studio**

**Area: 55.37 m<sup>2</sup>**

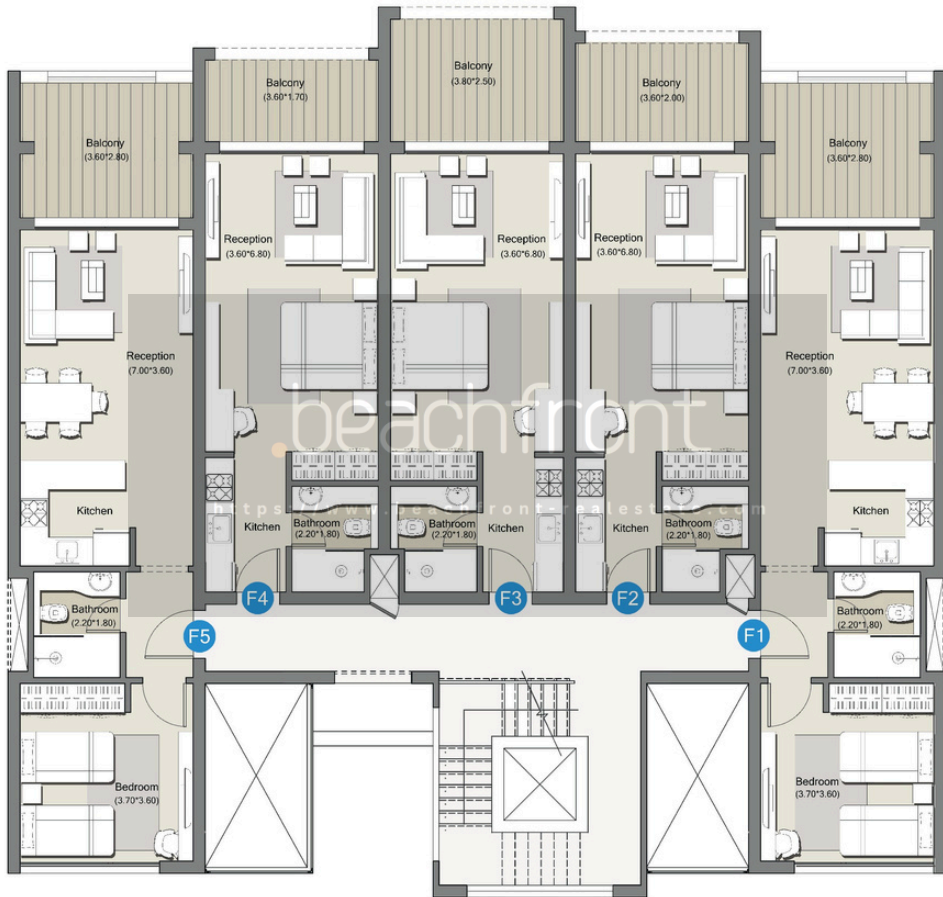
## **Unit F5 - One bedroom**

**Area: 82.68 m<sup>2</sup>**



### **DISCLAIMER**

All render and visual materials are for illustrative purpose only, actual areas may vary from the stated figures. All dimensions are measured to structural elements. Capital Link reserved the right to make minor modifications without prior notice. Unit floor plan might be mirrored according to its location in the layout.



# *Type F - Second floor*

## **Unit P1 - One bedroom**

**Area:** 87.34 m<sup>2</sup>

**Roof:** 77.92 m<sup>2</sup>

## **Unit S2 - Studio**

**Area:** 56.92 m<sup>2</sup>

## **Unit S3 - Studio**

**Area:** 59.60 m<sup>2</sup>

## **Unit S4 - Studio**

**Area:** 55.57 m<sup>2</sup>

## **Unit P5 - One bedroom**

**Area:** 87.43 m<sup>2</sup>

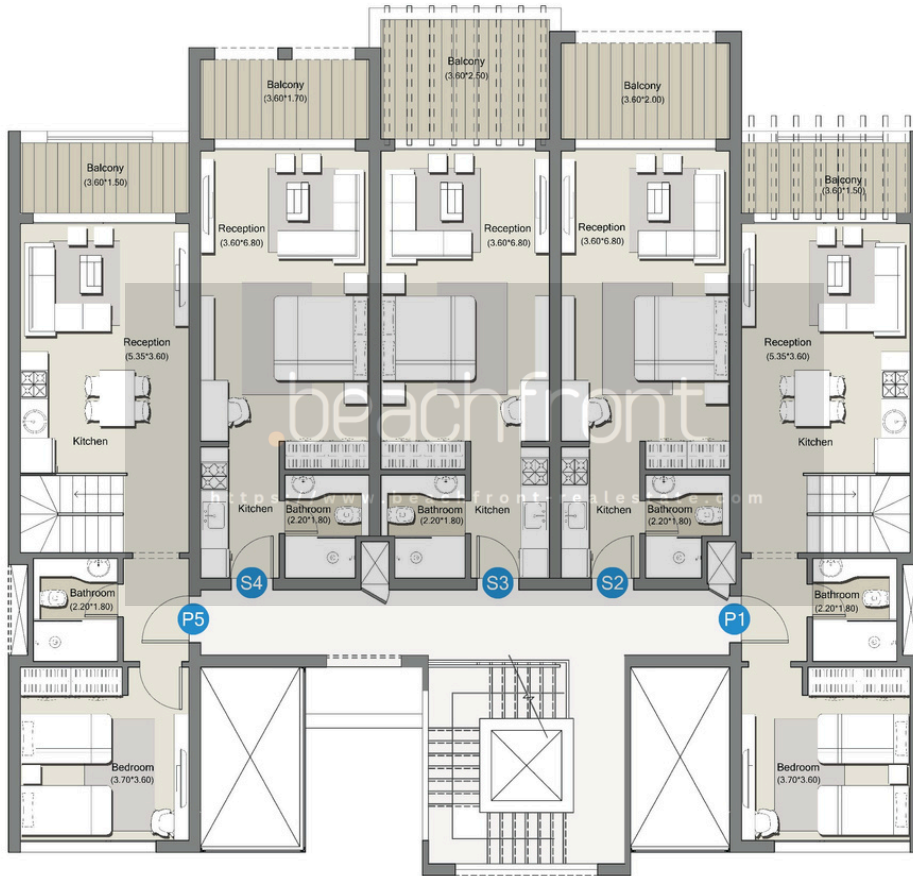
**Roof:** 77.92 m<sup>2</sup>

### **DISCLAIMER**

All render and visual materials are for illustrative purpose only. actual areas may vary from the stated figures. All dimensions are measured to structural elements. Capital Link reserved the right to make minor modifications without prior notice. Unit floor plan might be mirrored according to its location in the layout.

beachfront

<https://www.beachfront-realestate.com>



# *Type F - Roof floor*

beachfront

<https://www.beachfront-realestate.com>

## **DISCLAIMER**

All render and visual materials are for illustrative purpose only. actual areas may vary from the stated figures. All dimensions are measured to structural elements. Capital Link reserved the right to make minor modifications without prior notice. Unit floor plan might be mirrored according to its location in the layout.





# Type Gm- Summary

## No. of floors : 3

- Ground Floor
- First Floor
- second Floor

## No. of units: 6 per floor

## Unit type: Studio & One bedroom

## Unit area: 50 m<sup>2</sup> to 89 m<sup>2</sup>

## Penthouse area: 96 m<sup>2</sup> to 103 m<sup>2</sup>

<https://www.beachfront-realestate.com>



**Building Location**

## DISCLAIMER

All render and visual materials are for illustrative purpose only, actual areas may vary from the stated figures. All dimensions are measured to structural elements. Capital Link reserved the right to make minor modifications without prior notice. Unit floor plan might be mirrored according to its location in the layout.



# Type Gm- First Floor

## Unit F1 - One Bedroom

Area: 86.5 m<sup>2</sup>

## Unit F2 - Studio

Area: 56.6m<sup>2</sup>.

## Unit F3 - Studio

Area: 59.1 m<sup>2</sup>

## Unit F4 - Studio

Area: 57.5 m<sup>2</sup>

## Unit F5 - Studio

Area: 55.4 m<sup>2</sup>

## Unit F6 - One Bedroom

Area: 88.6 m<sup>2</sup>



### DISCLAIMER

All render and visual materials are for illustrative purpose only. actual areas may vary from the stated figures. All dimensions are measured to structural elements. Capital Link reserved the right to make minor modifications without prior notice. Unit floor plan might be mirrored according to its location in the layout.



# Type Gm- Second floor

## Unit P1 - One bedroom

Area: 96.1 m<sup>2</sup>

Roof: 91.69 m<sup>2</sup>

## Unit S2 - Studio

Area: 51.7 m<sup>2</sup>

## Unit S3 - Studio

Area: 59.4 m<sup>2</sup>

## Unit S4 - Studio

Area: 50.5 m<sup>2</sup>

## Unit S5 - Studio

Area: 55.8 m<sup>2</sup>

## Unit P6 - One bedroom

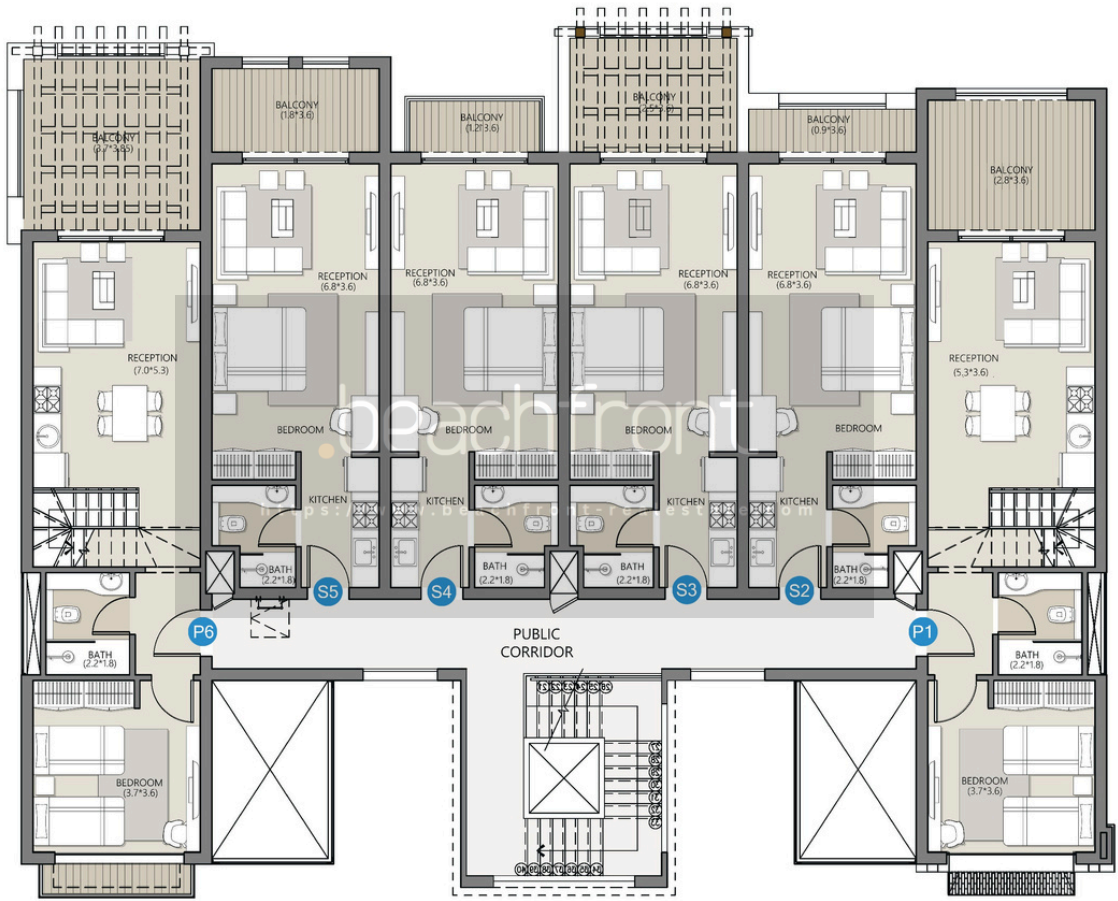
Area: 103.2 m<sup>2</sup>

Roof: 87.57 m<sup>2</sup>



### DISCLAIMER

All render and visual materials are for illustrative purpose only. actual areas may vary from the stated figures. All dimensions are mesured to structural elements. Capital Link reserved the right to make minor modifications without prior notice. Unit floor plan might be mirrored according to its location in the layout.



# *Type Gm- Roof floor*

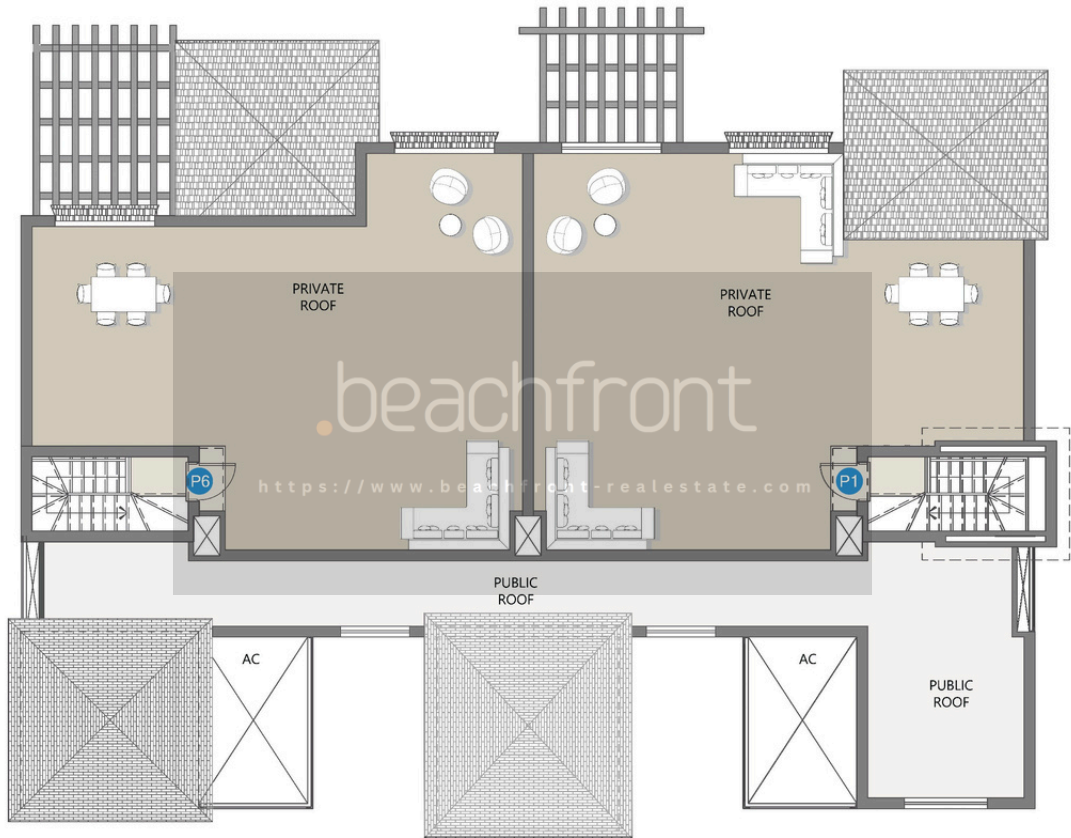
beachfront

<https://www.beachfront-realestate.com>

## **DISCLAIMER**

All render and visual materials are for illustrative purpose only. actual areas may vary from the stated figures. All dimensions are measured to structural elements. Capital Link reserved the right to make minor modifications without prior notice. Unit floor plan might be mirrored according to its location in the layout.





*Developed By*



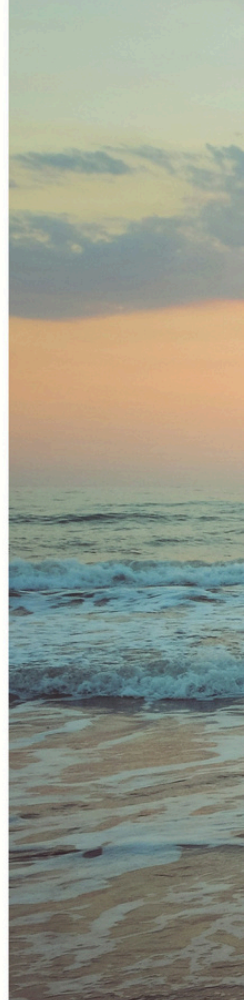
Established in 2020 by prestigious and reputable founders and partners, Capital Link Developments is committed to creating a durable bond between customers and the company.

Grown during a critical period challenging the real estate market in Egypt, the company has flourished, constructing diverse contemporary projects that capture people's aspirations and shape them into livable buildings.

Capital Link Developments caters to its clients every step of the way, from the moment they purchase their unit until the day they happily reside in it.

The company updates its strategic plans according to daily innovations and smart inventions, aiming to stay abreast of the present and add value to the future.

The people of Capital Link Developments are keen to offer a delightful experience to every person who chooses to trust the company.



# Our Success Partners



**PROGATE**  
DEVELOPMENT

OWNER



**CAPITAL**  
**LINK**  
DEVELOPMENTS

15642  
DEVELOPER

**mimar**

DESIGN  
CONSULTANT



ACE CONSULTING ENGINEERS  
MOHARRAM BAKHOUM

MAIN  
CONSULTANT



**MASTER LINK**

MAIN  
CONTRACTOR

*presented by*

**beachfront**

<https://www.beachfront-realestate.com>



Let's embrace *happiness* together

The logo for Beachfront Real Estate, featuring the word "beachfront" in a lowercase, sans-serif font. A small orange dot is positioned to the left of the letter "b".

<https://www.beachfront-realestate.com>